

Barksdale Intermediate Fixed

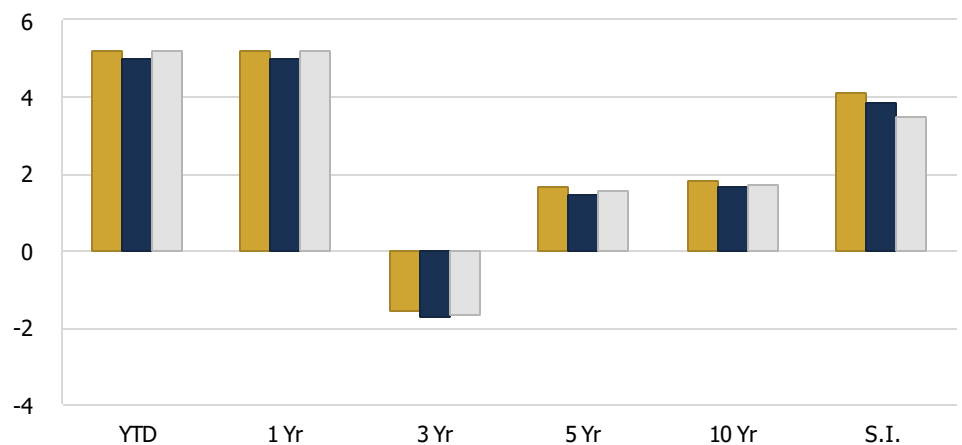
Investment Philosophy

Barksdale's investment philosophy is based on our view that the long-term returns of investment grade fixed income portfolios are primarily a function of income. The foundation of our approach is an ongoing effort to maximize income by identifying and taking advantage of various trends affecting fixed income securities, occasional inefficiencies in the markets, and by continuously assessing the relative value of the major sectors of the bond market. Barksdale's core focus is on sector allocation, security selection, and portfolio construction. This is managed by utilizing the firm's experienced portfolio management team combined with a robust investment process.

Product Profile

Portfolio Mgmt Strategy	Active
Inception Date	01/01/2001
Preferred Benchmark	Bloomberg US Interm. Govt/Credit
Geographic Region	United States
Duration Emphasis	Intermediate
Default Vehicle Type	Separate/Segregated Account
Base Currency	US Dollar (USD)

Performance (Annualized Returns)



	RM	YTD	1 Yr	3 Yr	5 Yr	10 Yr	S.I.
Barksdale Intermediate Fixed	Gross	5.20	5.20	-1.54	1.65	1.85	4.10
Barksdale Intermediate Fixed	Net	5.01	5.01	-1.71	1.47	1.65	3.88
Bloomberg US Interm. Govt/Credit	Index	5.24	5.24	-1.63	1.59	1.72	3.51

Portfolio Characteristics

Average Maturity (Yrs)	4.65
Modified Duration (Yrs)	4.07
Yield to Maturity	4.45%
Yield to Worst	4.44%
Current Wgtd. Avg. Coupon	3.36%

Credit Quality (%)

AAA	59.45%
AA	1.75%
A	21.77%
BBB	16.98%

Sector Weightings (%)

Cash	0.58%
US Treasury	49.02%
Agencies/Quasi-Sovereigns	0.08%
Securitized	9.32%
Invnt Grade Corporate	40.66%

Duration Distribution (%)

< 1 Yr	6.29%
1-3 Yrs	29.71%
3-5 Yrs	33.54%
5-7 Yrs	19.00%
7-10 Yrs	11.46%
10-20 Yrs	0.00%

40 Burton Hills Blvd., Suite 230
Nashville, TN 37215
615-665-1085
www.barksdaleim.com

Contact:
Sarah Lang 615.928.8837
slang@barksdaleim.com



Barksdale Investment Management

Fact Sheet Disclosures

Advisory services offered through Barksdale Investment Management, an investment adviser registered with the Securities and Exchange Commission. Barksdale has compiled the performance data in this report. Actual returns for individual client portfolios invested in the Strategy and managed by Barksdale may vary and do not necessarily coincide exactly with the returns for the composite performance reflected on this fact sheet. The returns shown are a composite of all client accounts that are substantially invested in the strategy indicated.

The performance data shown are gross and net of fees. The gross of fees returns are gross of management and custodian fees and net of transactions expenses. Net of fee returns are net of actual management fees and transactions expenses and gross of custodian fees. These management fees and other related fees paid by a client will reduce the return of the client's account. The stated fee schedule for this composite is 0.25 of 1% on the first \$10 million in assets and 0.23 of 1% on the next \$15 million in assets. Generally, at Barksdale, fees are negotiable based on assignment size, geographic location, and servicing requirements. Additional information regarding Barksdale's fees is included in its Part 2 of Form ADV.

The performance displayed here does not guarantee future results. As market conditions fluctuate, the investment return and principal value of any investment will change. Diversification may not protect against market risk. There are risks involved with investing, including possible loss of principal. Volatility represents the expected risk of the portfolio relative to major asset classes. Before investing in any investment portfolio, an investor and their Advisor should carefully consider the investor's investment objectives, time horizon, risk tolerance, and fees.

Portfolio information such as characteristics, weightings, duration, etc. are based on weighted average of all portfolios within the composite. Client portfolios are individually managed; therefore, portfolio information will vary from composite information.

All information contained herein is strictly confidential and may not be reproduced, in whole or in part without the prior written consent of Barksdale. This document does not constitute an offer to sell or the solicitation of an offer to purchase any security or investment product or service nor shall it be construed or relied upon as providing any type of investment, legal, tax or other advice.

Benchmark Disclosures

The benchmarks selected are not intended to represent the security selection process or holdings, but serve as a frame of comparison using established, well known indices. These indices are not available for direct investment. A person who purchases an investment product which attempts to mimic the performance of an index will incur expenses such as management fees, transaction costs, etc. which would reduce returns.

The Bloomberg Intermediate US Government/Credit Bond Index is a broad-based flagship benchmark that measures the non-securitized component of the US Aggregate Index with less than 10 years to maturity. The index includes investment grade, US dollar-denominated, fixed-rate treasuries, government-related and corporate securities. (<https://bloomberglp.com/>)

Barksdale Investment Management claims compliance with the Global Investment Performance Standards (GIPS®). GIPS® is a registered trademark of CFA Institute. CFA Institute does not endorse or promote this organization, nor does it warrant the accuracy or quality of the content contained herein. To obtain a GIPS Composite Report please call 615.665.1085.

Advisory Services offered through Barksdale Investment Management; an investment adviser registered with the U.S. Securities & Exchange Commission.